

# BRAUN

Nasal aspirator 1

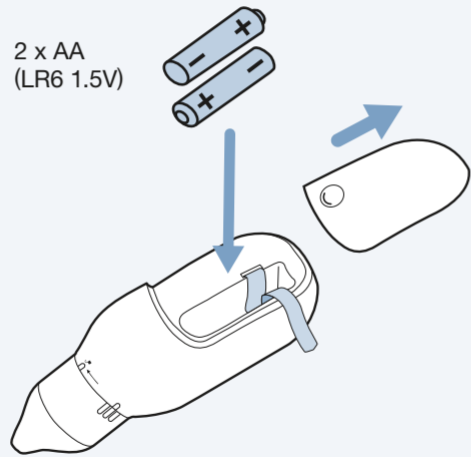
Quick-start  
guide

Guía de inicio  
rápido

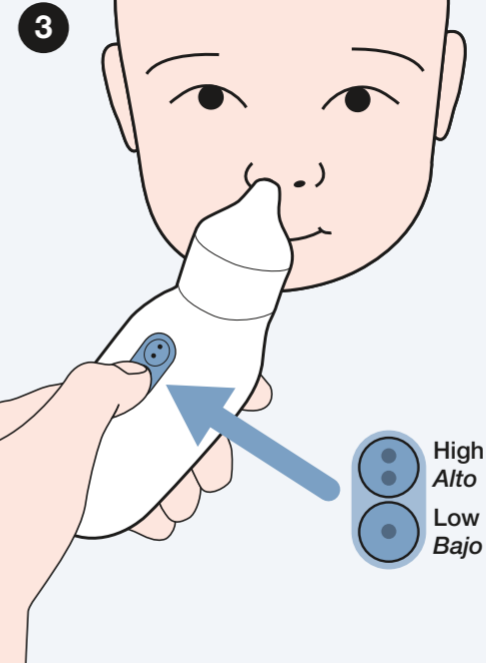
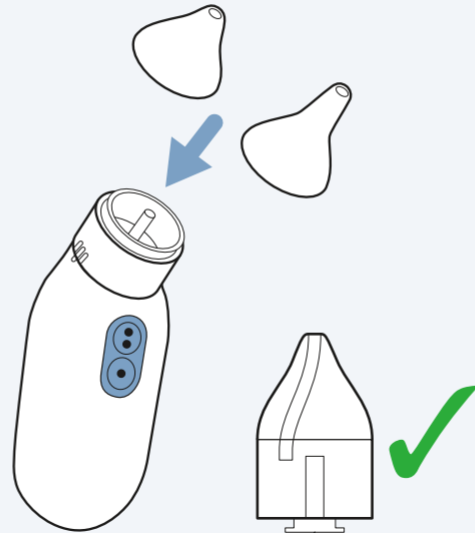


**1** Insert Batteries  
Inserte las pilas

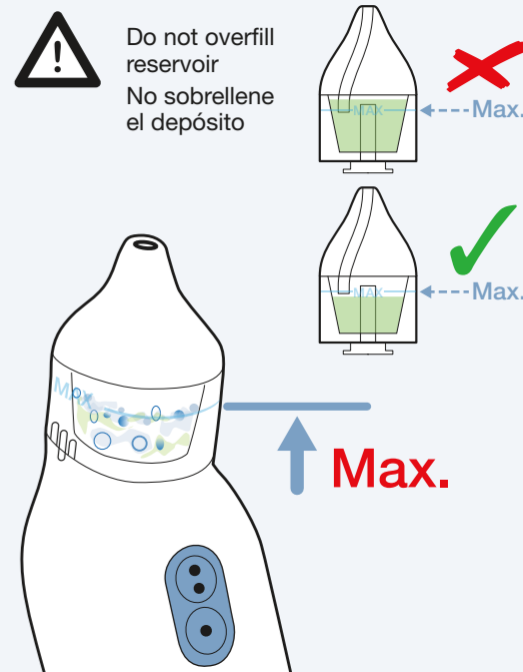
2 x AA  
(LR6 1.5V)



**2** Select tip & press in place  
Seleccione la punta y presione en  
su lugar

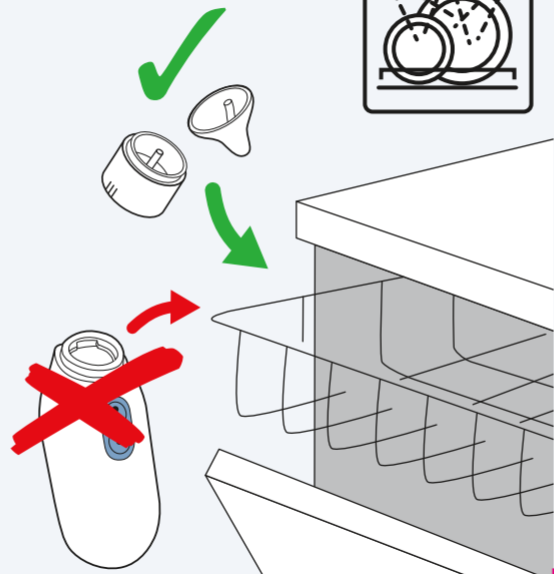
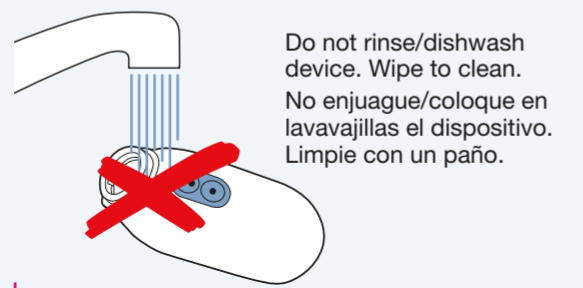
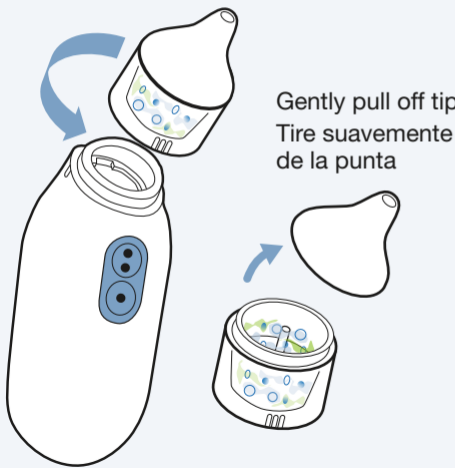


**!** Do not overfill  
reservoir  
No sobrellene  
el depósito





Cleaning Instructions:  
Twist to lock/unlock reservoir  
Instrucciones de Limpieza:  
Gire para asegurar/liberar el depósito



US For additional information visit:  
[www.braunnasalaspirator.com](http://www.braunnasalaspirator.com)  
SP Para obtener más información visite:  
[www.braunnasalaspirator.com](http://www.braunnasalaspirator.com)



This product is manufactured under license to the 'Braun' trademark.  
'Braun' is a registered trademark of Braun GmbH, Kronberg, Germany.  
© 2018, All rights reserved. BNA 100US 25OCT18 P/N: A002262R1